



Healthcare



Introduction

Redpath is focused on providing an unparalleled level of service to our Healthcare clients in Acute, Primary and Social Care. With our dedicated healthcare team, we are setting the benchmark for service delivery of refurbishment, fit-out and construction projects within live healthcare environments across Scotland.

We work collaboratively with Clinical Leads, Estates Teams, Design Teams and our specialist supply chain to maintain continuity of critical care services within our communities.

By understanding the daily pressures of clinical teams, we can tailor our construction approach to ensure minimal disruption, whilst maintaining quality on site.

Our Healthcare Manager, Stephen Bradley, has over 20 years of experience in the construction industry. Dedicating the last ten years to leading the preconstruction design management and operational implementation of various NHS critical care projects in Highland, Grampian, Lanarkshire, Glasgow and Ayrshire.

Stephen has overall responsibility for our Healthcare sector and will lead our Healthcare Team in delivering patient focused projects.



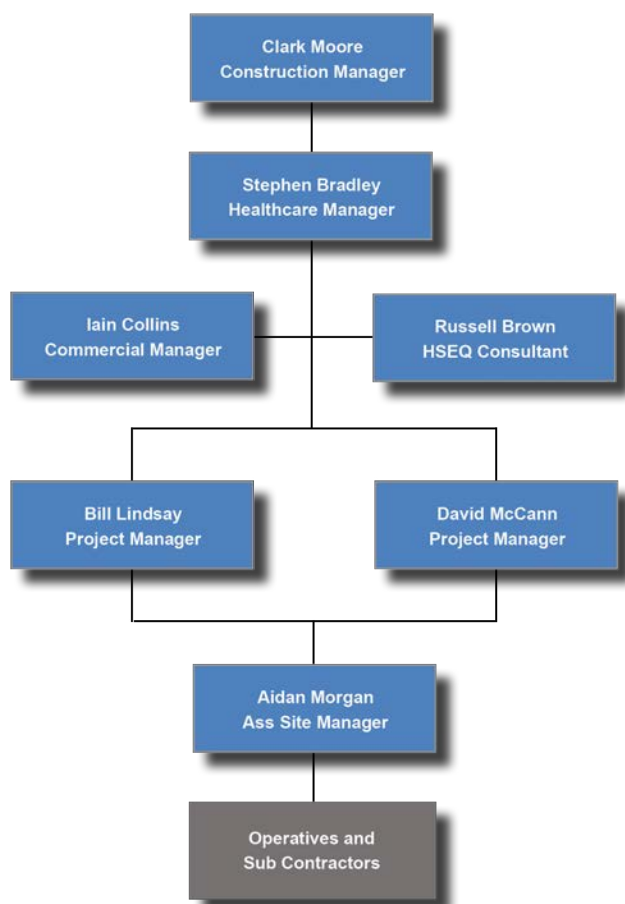
Stephen Bradley
Healthcare Manager

Our Approach

Our Healthcare projects are managed and delivered by our dedicated and well-established team who bring a variety of expertise delivering critical care projects within live in-patient hospital environments.

We will plan, implement and ensure the delivery of all aspects of each project, including:

- Design coordination
- Programming
- Planning
- Procurement (and early procurement requirements)
- Implementation of SHFN 30 Part B and HAI SCRIBE
- Quality control
- Health and safety
- Environmental management
- Overall project management



Collaboration

We recognise collaboration and stakeholder engagement is fundamental in achieving, and exceeding, our clients' expectations. We engage with NHS Clinical Leads, Design Teams, NHS Estates Teams and our specialist supply chain to determine complex project goals and deliver the end user with their project aspirations.

Managing Risks

We manage key project priorities and risks. Through early identification we will mitigate all negative impacts on NHS business continuity as far as is reasonably practical.

We will manage risks associated with:

- Working in live clinical environments, to ensure full segregation of the construction areas from members of the public, staff and patients.
- Procurement – procuring the necessary materials from our suppliers timeously in relation to their lead times and specialist nature.
- Service break-ins – plan, programme and lead all service break in strategies ensuring minimum impact on clinical service provision.
- Excessive noise and vibration mitigation.
- Testing and commissioning – provide a draft then complete an agreed Witnessing and Commissioning Programme, which will allow all stakeholders to plan their project involvement to achieve the necessary completion.

Supply Chain Management

We have a strong supply chain, specialising in healthcare, complete with all essential and industry recognised certifications and memberships with trade federations.

Our selection process enables us to identify sub contractors who align with our own values, fair work practices, competency, safety, health, quality and environmental standards legislation.

Quality Control

Our established Quality Management System provides a framework for continually measuring and improving our performance. In line with our commitment to participate in all Lessons Learned reviews, we are satisfied we can provide the high standards of quality necessary within the Healthcare industry.

We implement our Quality Management System ensuring all aspects of our projects are fully planned, monitored and reported through to completion. Our Quality Management System is accredited to ISO 9001:2015 and is encompassed through our Quality Assurance Policy.

At the centre of this is the preparation of our Project Quality Plan.

Our Quality Plan includes:

- Hold Point and Test Plan/Inspection Matrix
- Inspection Check Lists
- Design Progress Tracking
- RFI Tracker/Technical Submissions Tracker
- Document Controls
- A fully detailed commissioning programme

Health and Safety

The safety, health and welfare of our employees, direct labour, sub contractors, clients' staff and members of the public are our priority in all construction projects.

Our accredited Health & Safety procedures ensures everyone is fully briefed and equipped to carry out all activities safely. We regularly review our performance and developments in legislation to ensure we are continually improving and are fully compliant.

Our Health & Safety Management System is accredited to ISO 45001:2018 and we are also proud to be accredited to the following health and safety schemes:

- Constructionline Gold
- CHAS
- SafeContractor
- Considerate Constructor
- Achilles BuildingConfidence



Ward 27 Refurbishment Glasgow Royal Infirmary

Redpath was appointed as principal contractor for all works associated with the refurbishment of the existing in-patient Ward 27. The project was delivered successfully within budget and time to facilitate the requirements for winter bed pressures.

The works included the strip out of all existing ward services and existing finishes back to the shell, the modernisation / redecoration of ward 24 below to allow drainage alterations for ward 27, installing all new upgraded ITS systems, new drainage and water supplies, new doors, flooring and a full window replacement package.

All works were programmed, planned and implemented within the live hospital environment, with minimum impact on Business Continuity. This included strategic planning for the installation of the new services and removal of all ward existing systems, such as Dead legs in the existing domestic water system.

NHS specific hygiene processes, as detailed through the Hai Scribe, were implemented to minimise the spread of infection, by the installation of a Hygienic IVS partition system at the ward entrance maintaining positive pressure within the created space.



CLIENT



NHS Greater Glasgow & Clyde

VALUE



£1.4 million

DURATION



20 weeks

Ward 1D and Clinic K University Hospital Crosshouse

This 24-week project provided an Acute Cardiac Care Unit (ACCU) and Discharge Lounge via the refurbishment and internal alterations of the existing Ward 1D and Clinic K respectively.

The completed project has created two single bed spaces for high level care, a six-bed high care ward, a 23-bed in-patient general care ward with associated support accommodation, and a day care facility adjacent to the ward.

The accommodation will provide modern compliant Cardiology care, meeting all current Scottish Healthcare standards and guidance.

Refurbishment works included the strip out of all existing services and wall / ceiling finishes back to the shell, the formation of new accommodation, reinstatement and upgrading of all ITS systems, new drainage and water supplies, new ventilation and heating systems, new doors, flooring and decoration throughout.

This project was deemed Essential and subsequently permitted to continue onsite during the Coronavirus nationwide lockdown. By working closely with the Clinical, Estates and Project Team, we ensured a robust Covid 19 Risk Assessment was established to mitigate the impact on completion.



CLIENT



NHS Ayrshire & Arran

VALUE



£1.9 million

DURATION



24 weeks

New 17 bed Trauma Ward University Hospital Wishaw

This project comprised the internal refurbishment of the existing medical records department on the ground floor of Wishaw General Hospital to create the first 17 bed Trauma ward.

This included the soft strip of all medical records equipment and furnishings, the creation of Hai Scribe isolation partitions (to separate our works from the adjacent Mental health ward and Mortuary), demolition / installation of new below ground drainage, new partitions throughout, new M&E services throughout, new external access doors and disconnection manhole, new flooring, all other essential Trauma lifesaving services.

The final product is of a very high quality with zero defects at occupation, therefore preventing potential disruption of care to the new patients. Our collaborative approach with the Design Team and our NHS colleagues provided the necessary vehicle to enable our productivity, ensure our supply chain was always informed, and created the proactive and reactive energy needed on live refurbishment projects where services, and business continuity of adjacencies, is paramount to the success of the project.



CLIENT



NHS Lanarkshire

VALUE



£1.2 million

DURATION



20 weeks

Theatre 5 Refurbishment

Royal Alexandra Hospital

We are currently engaged by NHS Greater Glasgow and Clyde to refurbish Theatre 5, which is one of nine existing operating theatres. The project is located within a very sensitive environment with live operations to either side of the construction site, and a live X-ray department below.

On Completion, the new Theatre 5 will provide an Ultraclean Operating Theatre incorporating a Laminar Flow canopy, new Theatre control panels, a dedicated AHU c/w dedicated ventilation and cooling, new medical pendants and all other new Mechanical and Electrical services necessary to meet the current standards of a modern operating theatre.

The project is challenging due to the live adjacencies. To mitigate the risk, we have decided to breach the external wall directly into the theatre footprint, thereby mitigating the impact on the adjacent theatres.

The project is expected to be completed May 2021.



CLIENT



NHS Greater Glasgow & Clyde

VALUE



£875,000

DURATION



17 weeks

